

When lead guitarist John Curulewski decided to leave the band, a frantic search was launched to find his replacement. Thirty-six hours later, down in Alabama, Styx found 23-year-old Tommy Shaw, who had been playing acoustic and steel guitar in a local band.

A week later Tommy was on the road with his new band. Everything clicked from the start: on stage the fierce guitar duels between tall, rangy JY and little, elfin Tommy Shaw brought Styx fans to their feet.

While the majority of songs on "Crystal Ball", Styx' second album, were penned by Dennis DeYoung, Tommy contributed four tunes in collaboration with the other band members, including the title track. "I began to feel like a full-fledged member of the group", he says. "Our styles seem to fit".

"The Grand Illusion" is Styx' third album for A & M. Double-platinum in America, the band regard it as a

landmark in their progression.

On the road for most of the year, Styx know that their live performances have kept them in the public eye and have created the attention needed for increasing airplay.

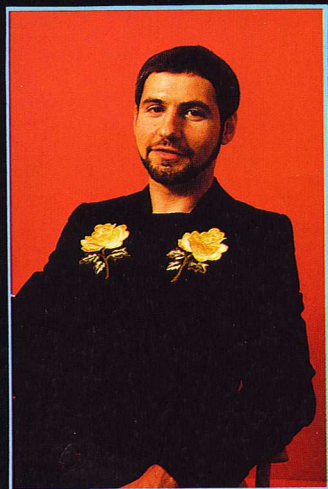
But that is not their only reason for long days of touring.

"Music is meant to be performed live. Records cannot be a true substitute", says Dennis.

"I think people are tired of seeing four guys in blue jeans jamming for an hour. They want a show", JY adds.

Each Styx member has a creative part in the production of their stage show. Chuck, who has a college degree in art and spent some years teaching high school students, acts as the band's art director; JY with his engineering

background oversees the technical end of the show; Dennis co-ordinates the musical aspects of the staging. Each member adds his own individual touch of expertise and they come together as Styx.



CHUCK PANOZZO
Bass Guitars and Vocals.



JAMES YOUNG
Guitars and Vocals.



TOMMY SHAW
Acoustic, Electric and
12 String Guitars and Vocals.